



NOTICE DE MONTAGE ARMADLOCK



JUMPY / EXPERT III (2016 à ce jour)



TOYOTA PROACE II (2016 à ce jour)

OPEL VIVARO (2019 à ce jour)

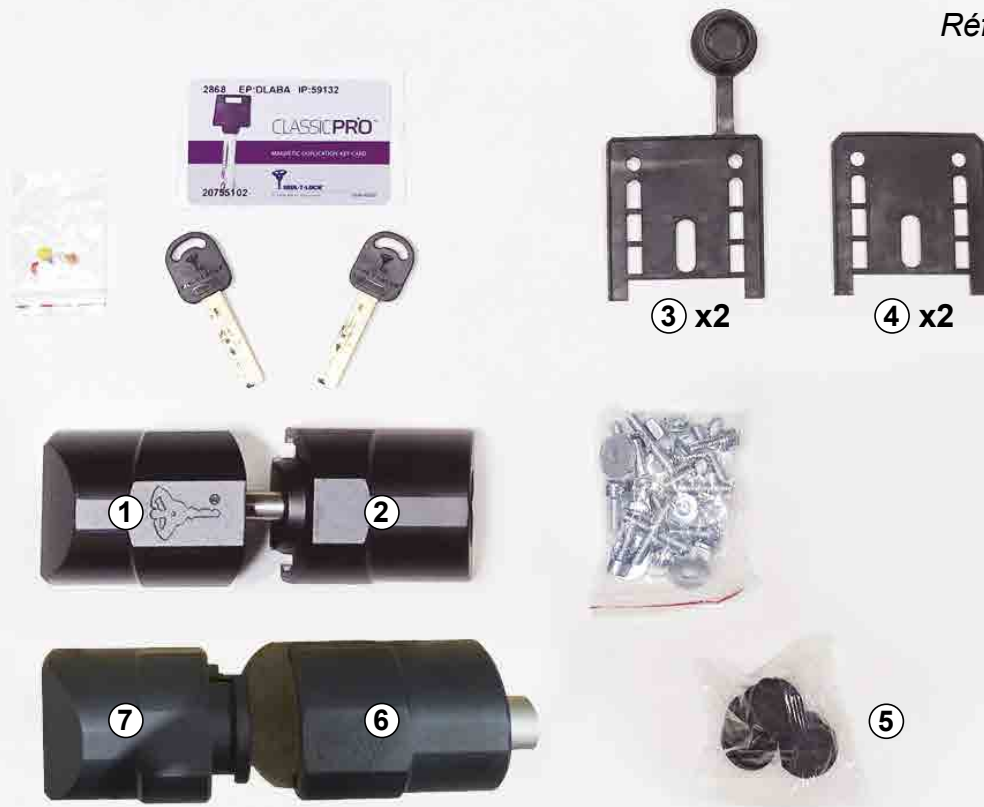


FIAT SCUDO 2022

ASSA ABLOY

Une marque du Groupe ASSA

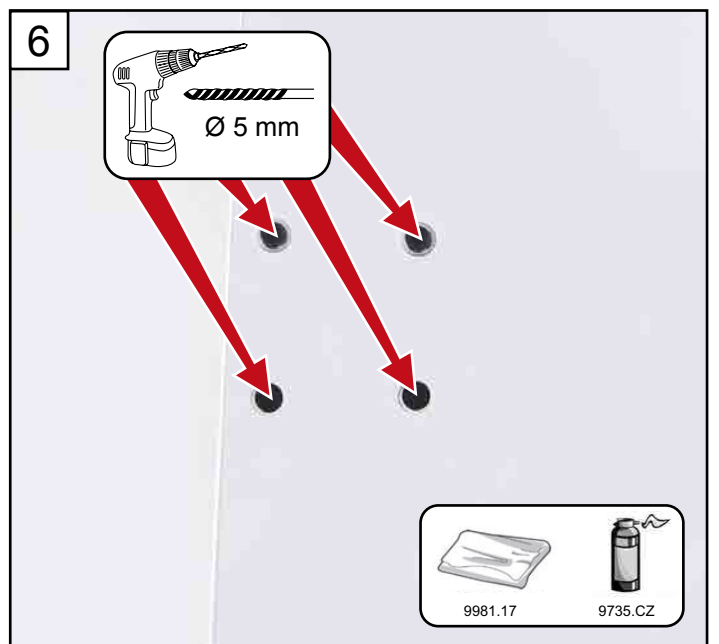
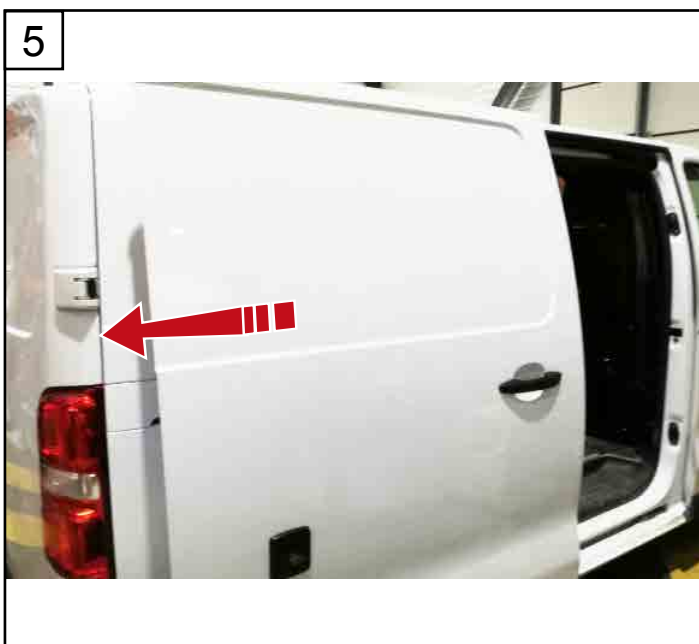
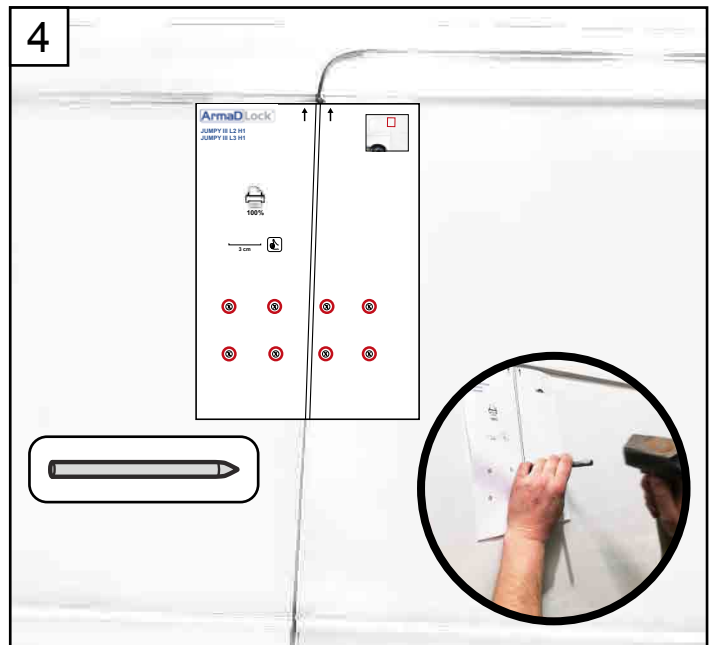
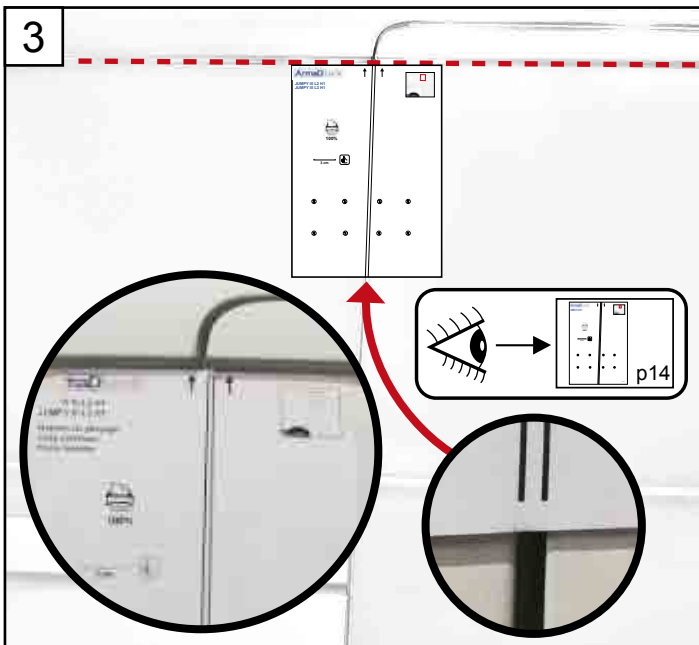
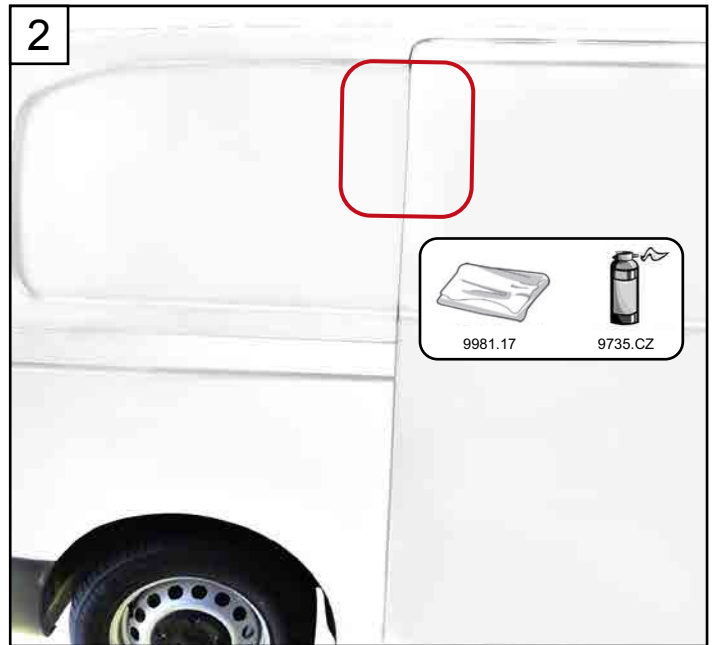
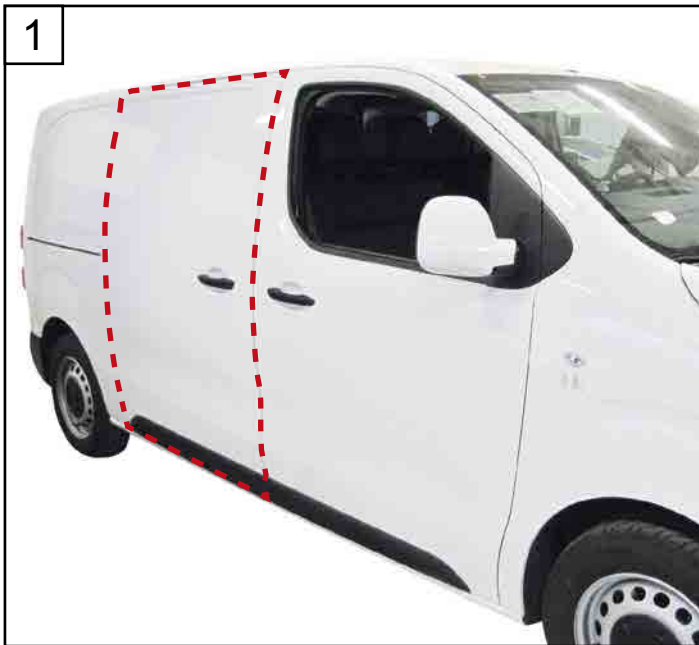
Réf : 16 192 289 80

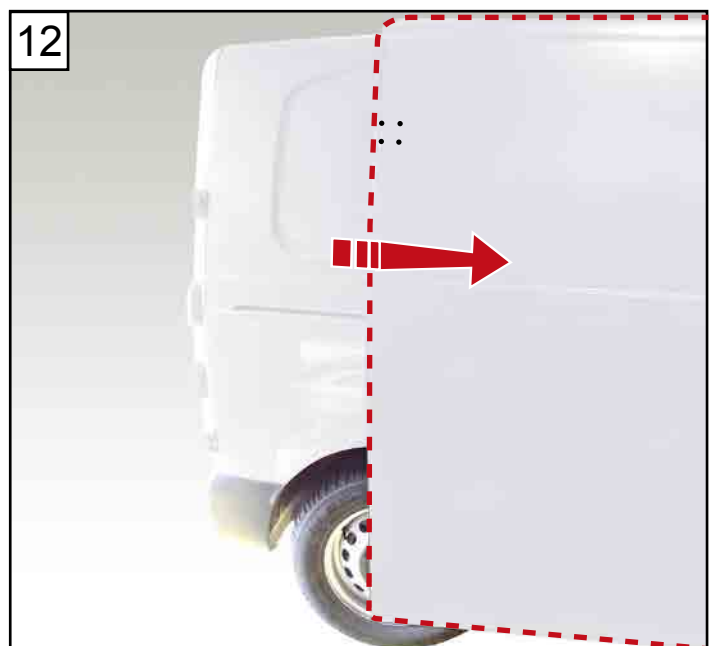
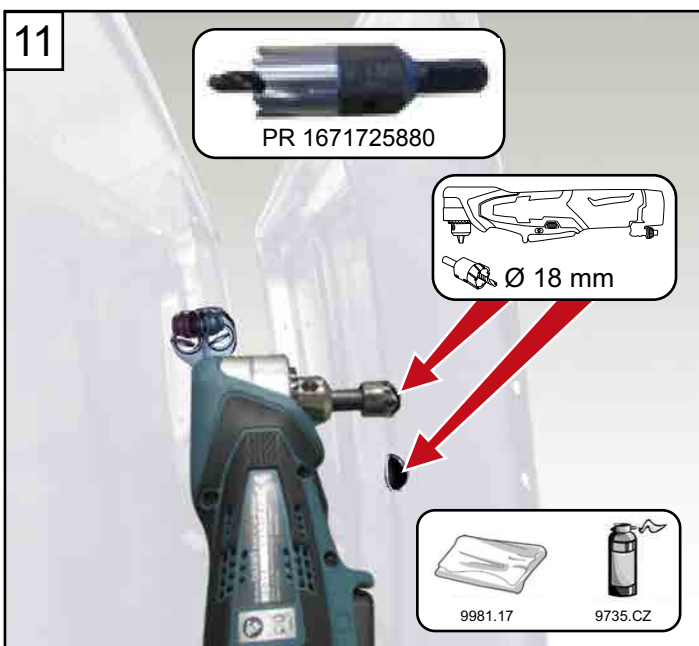
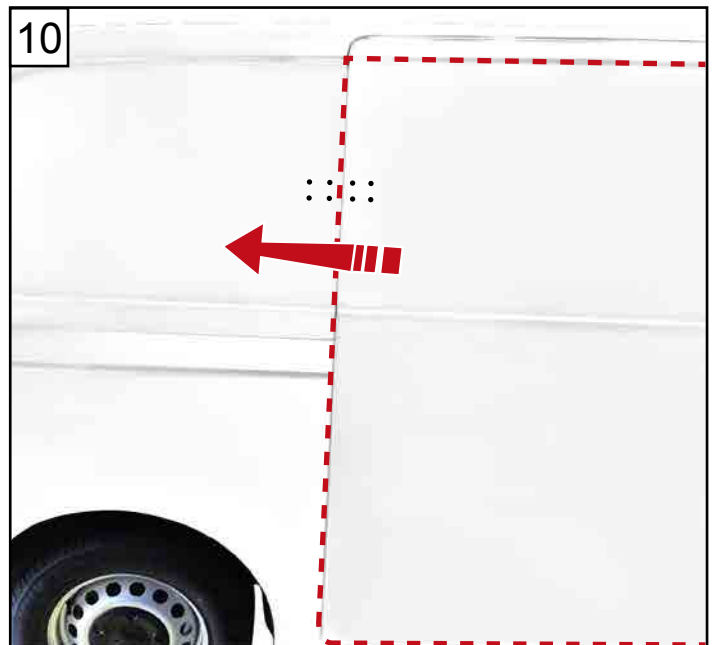
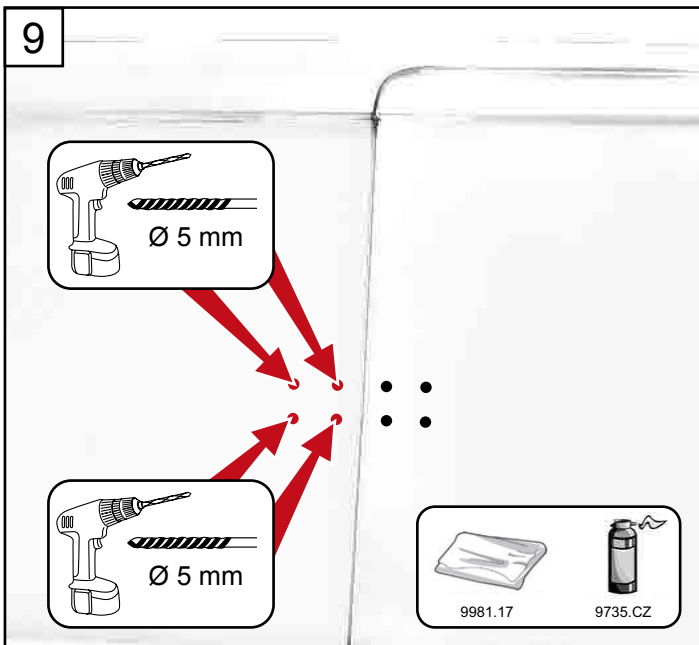
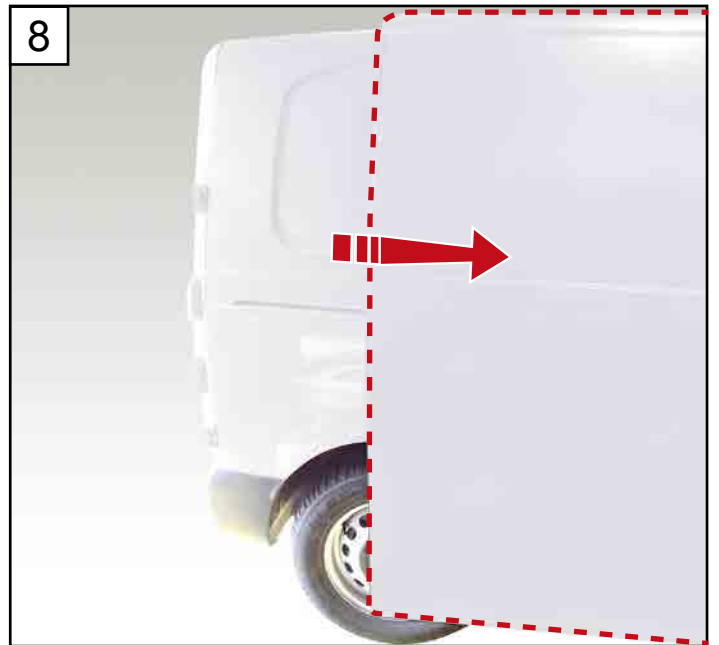
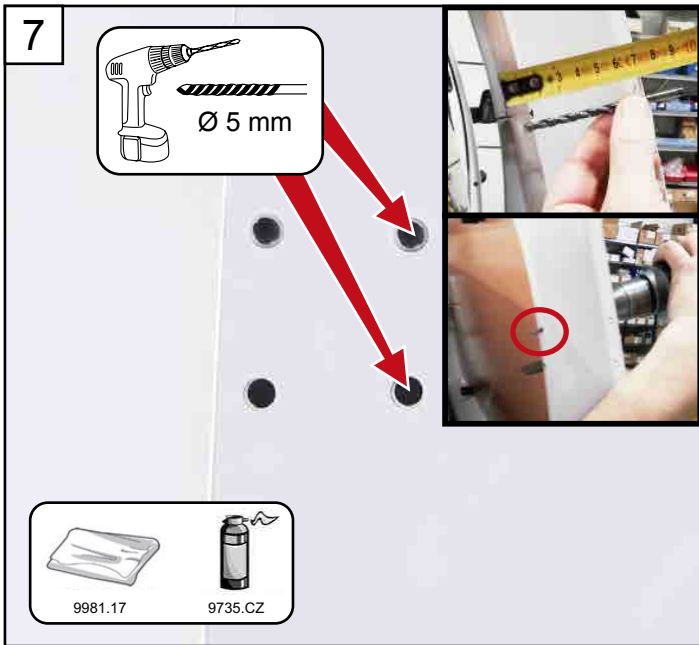


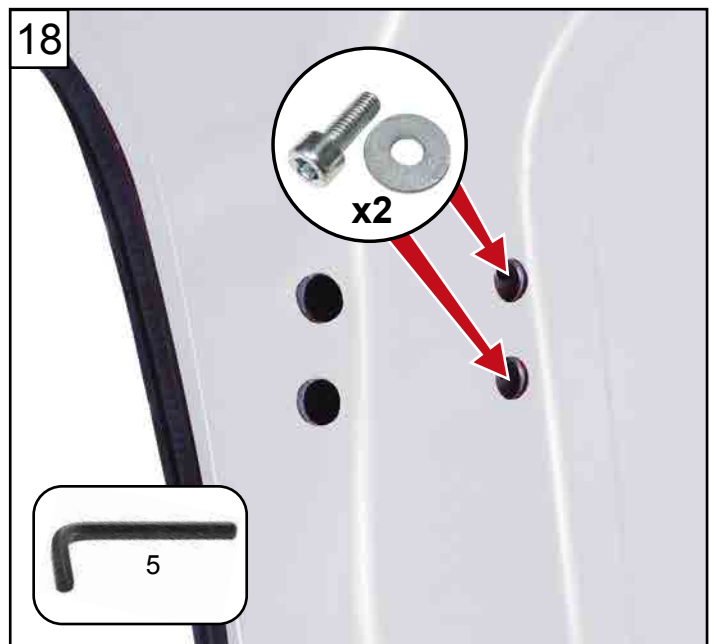
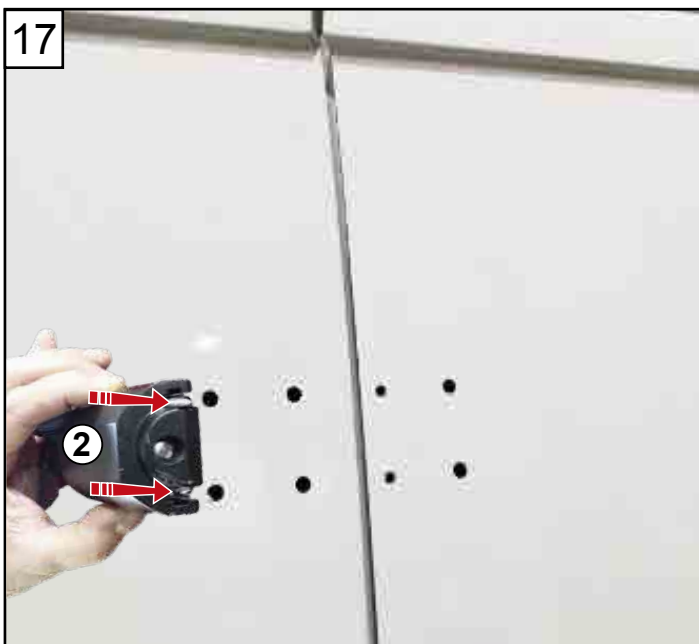
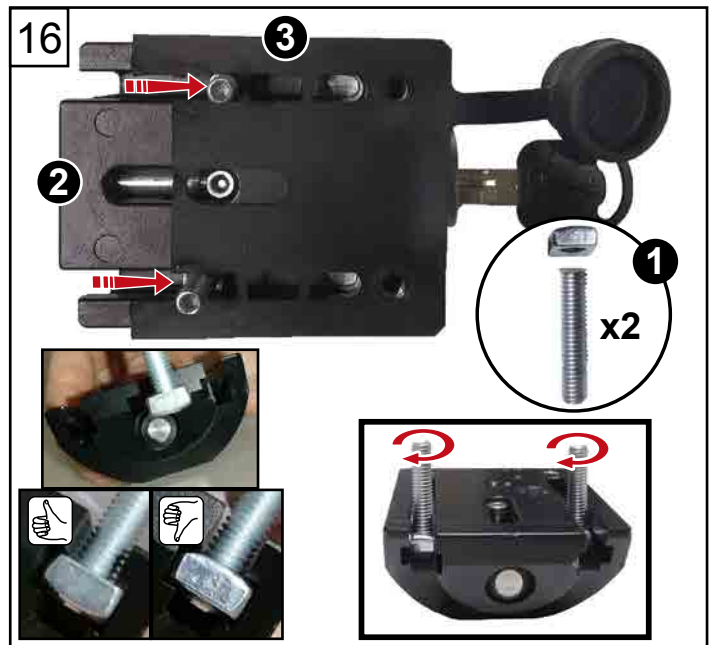
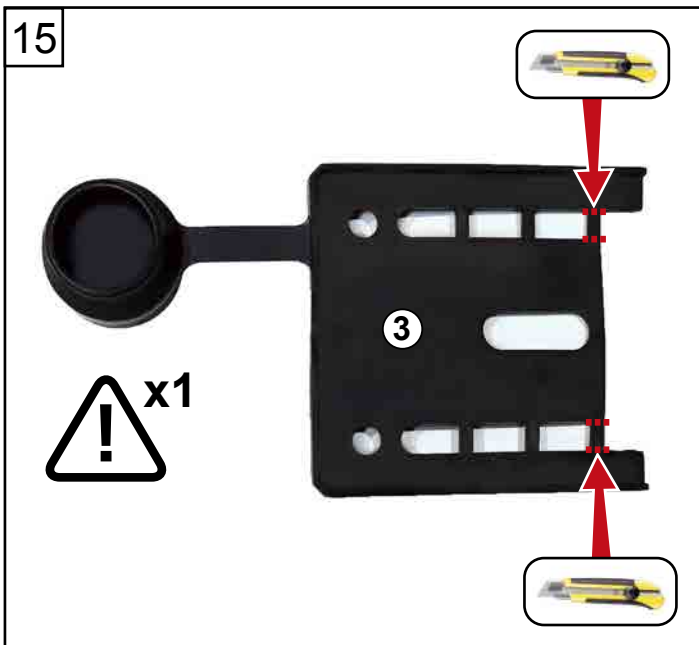
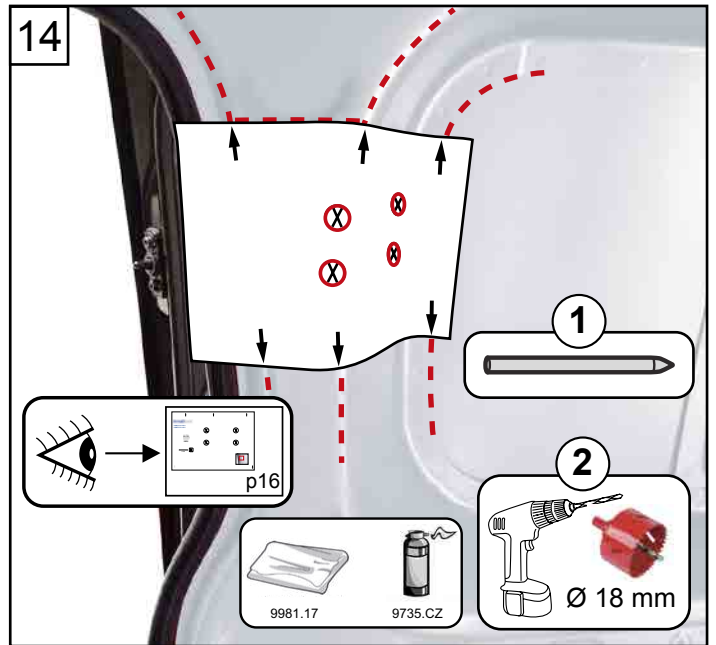
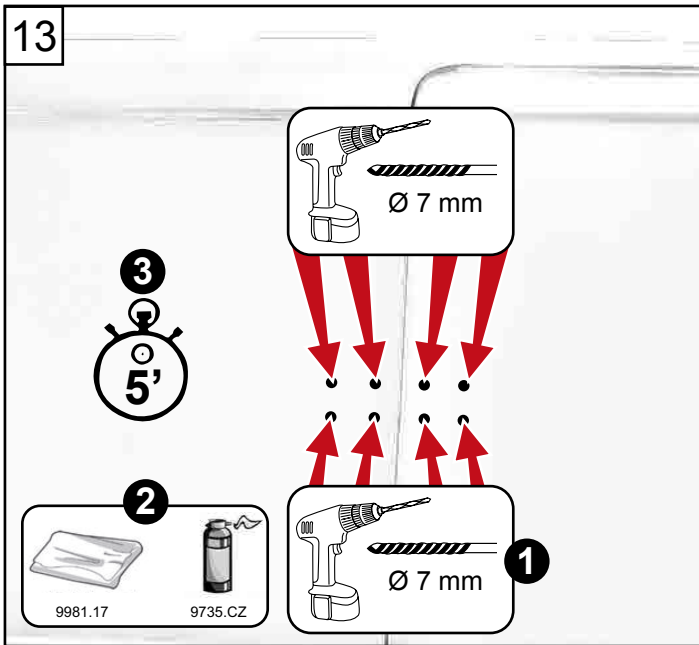
Réf : 16 192 288 80

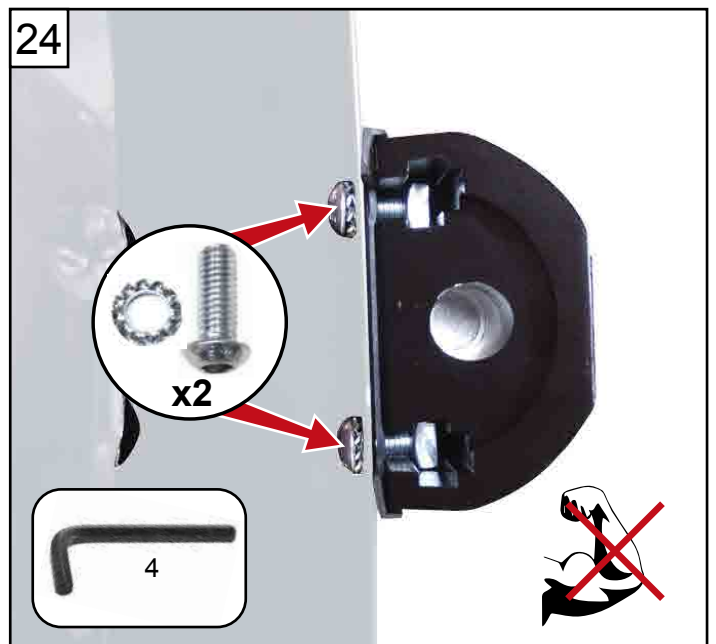
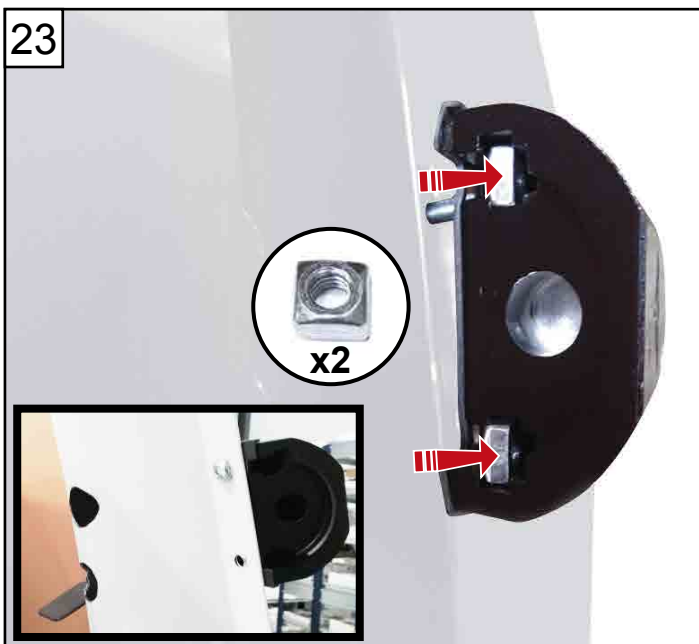
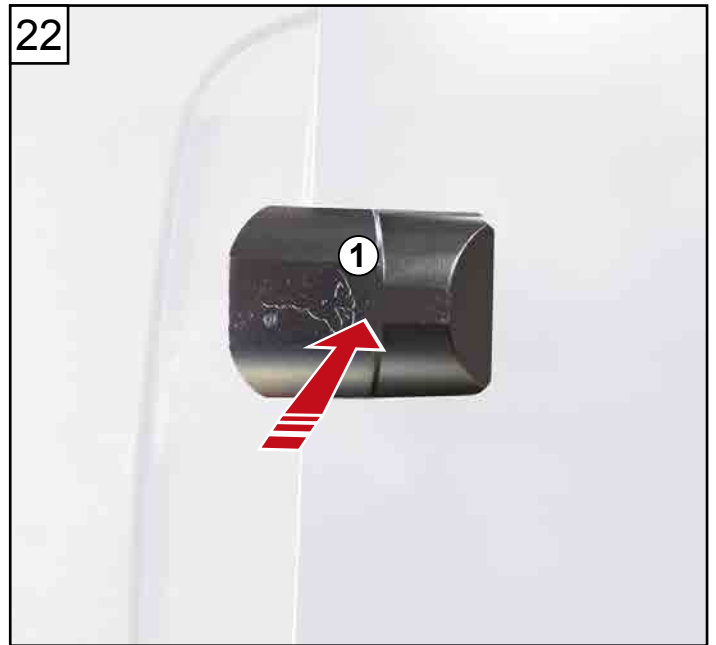
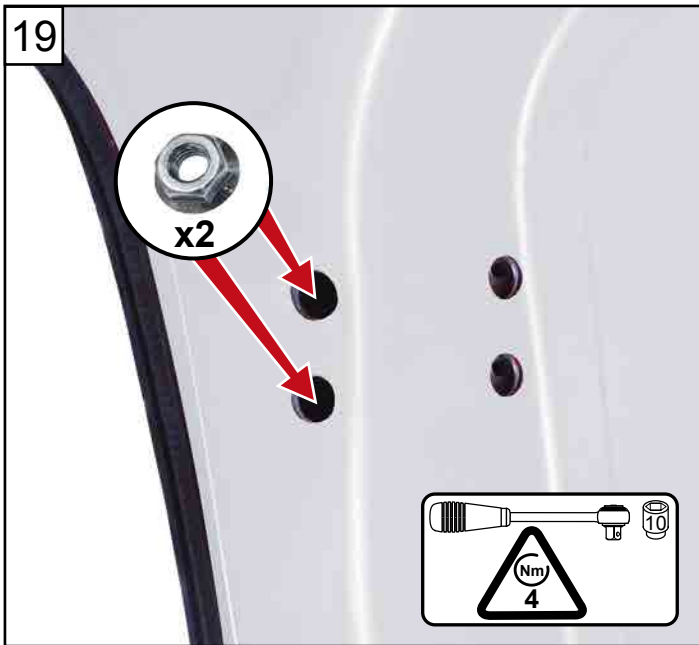


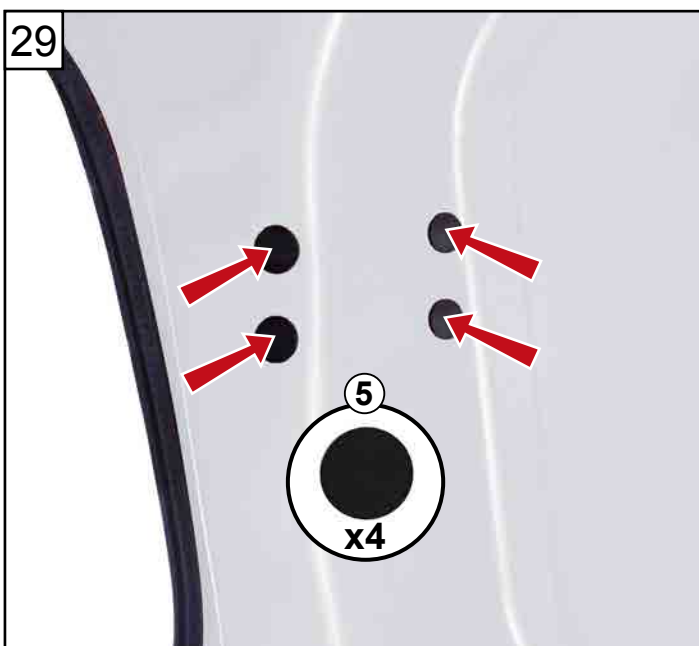
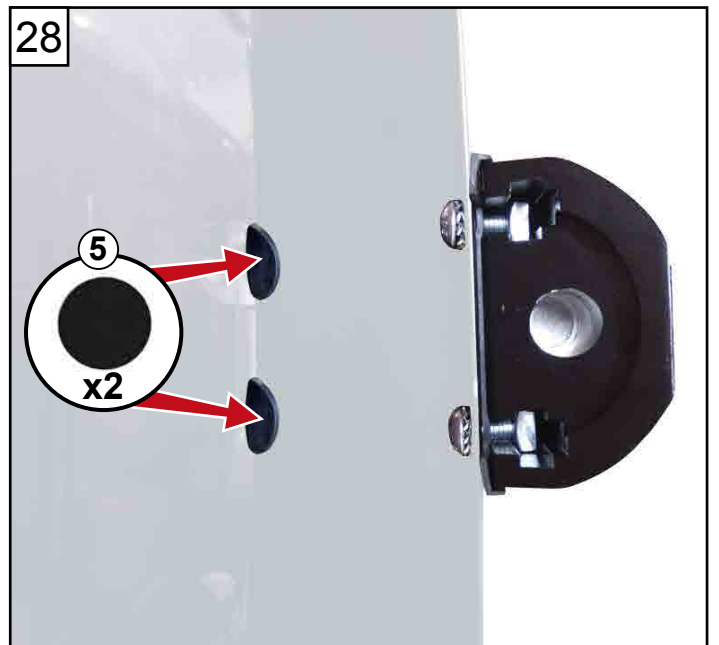
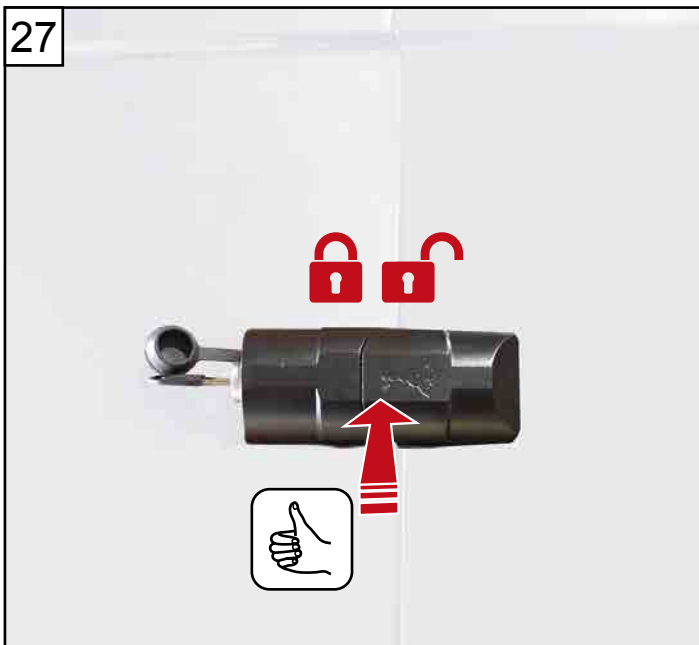
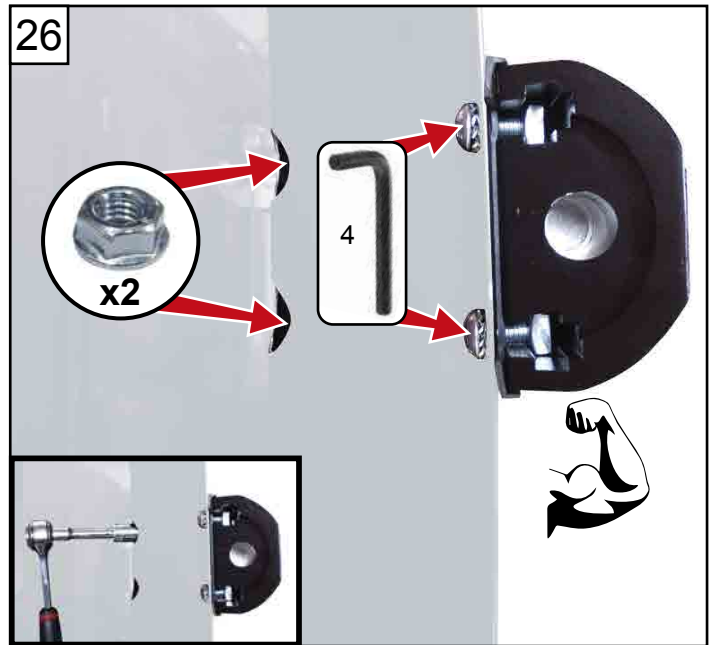
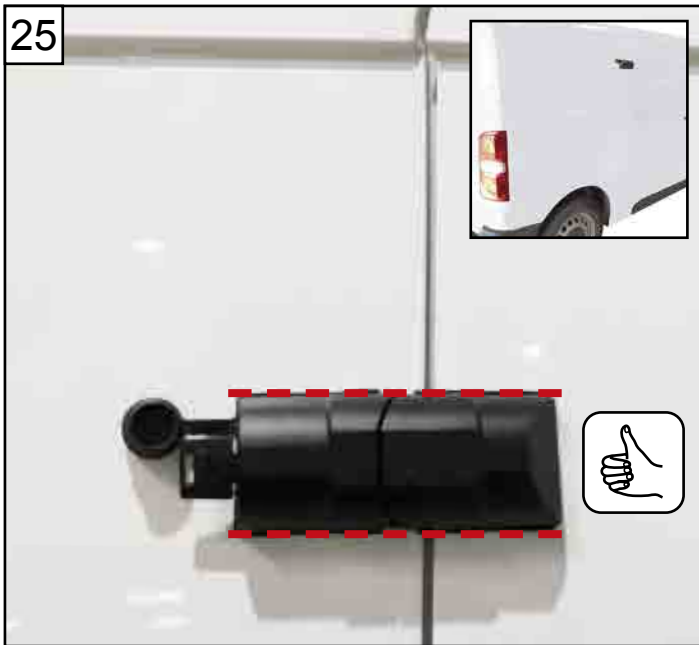
Date de création : 28/06/2021
Date de modification : 28/03/2022
Indice d'évolution : IND. D

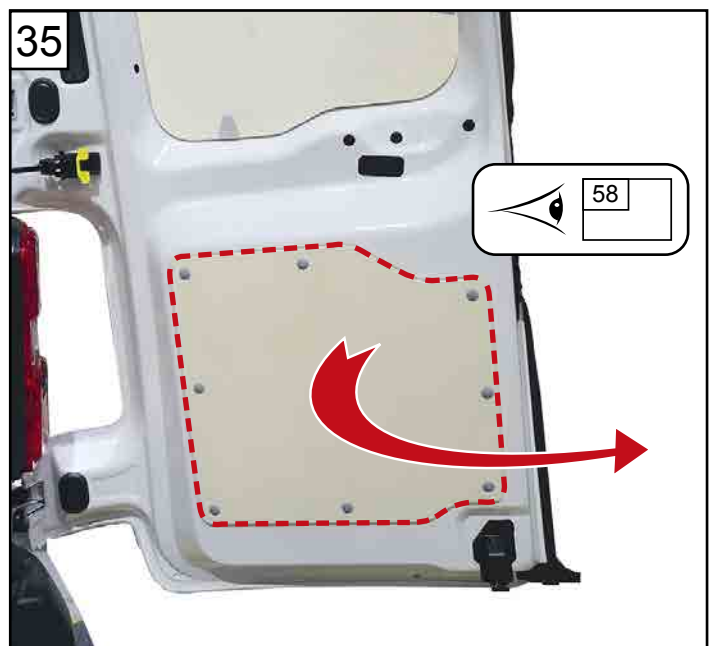
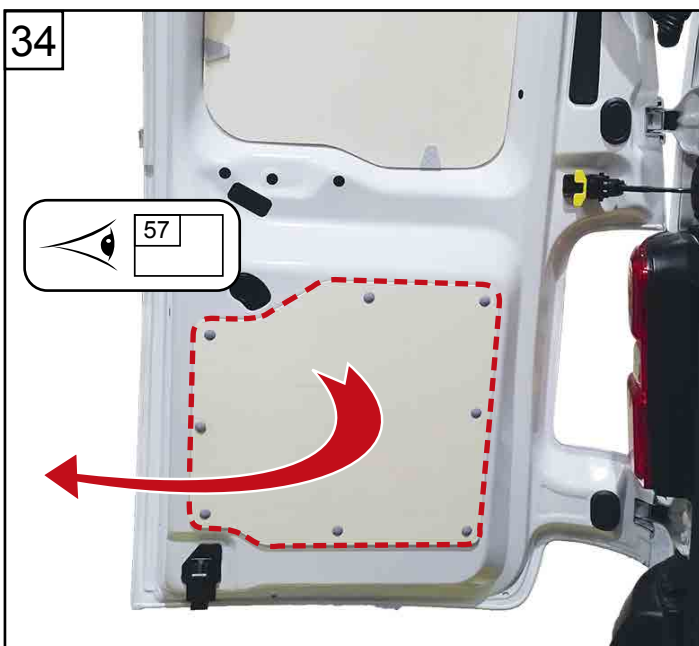
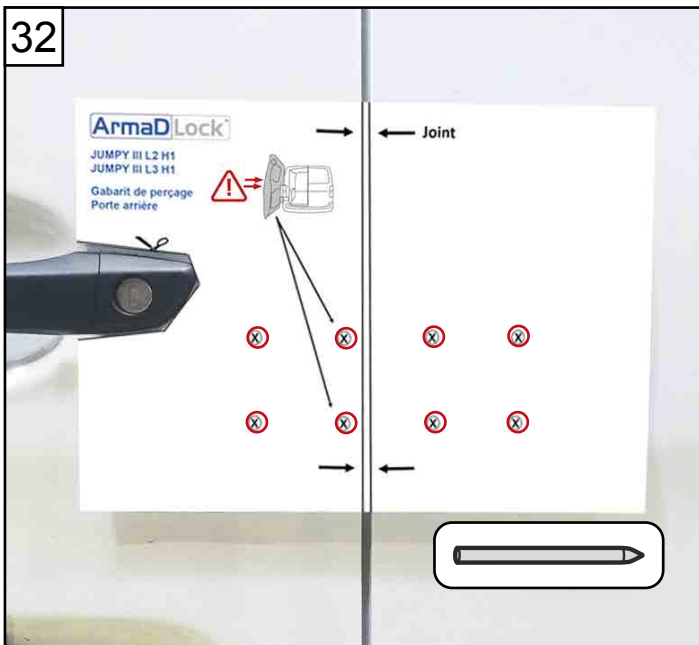
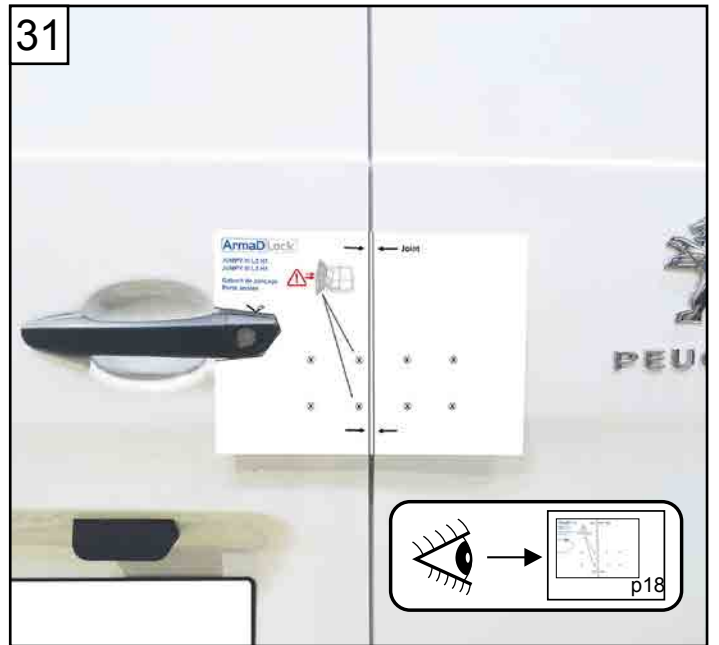
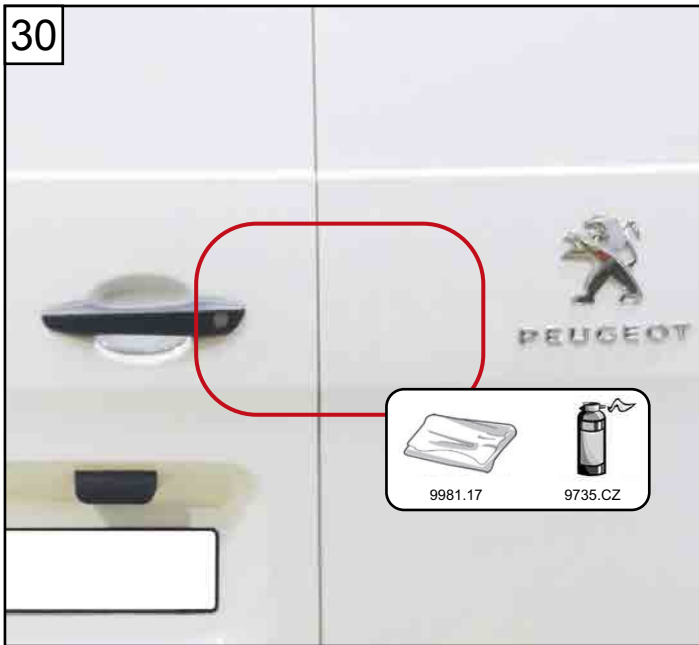


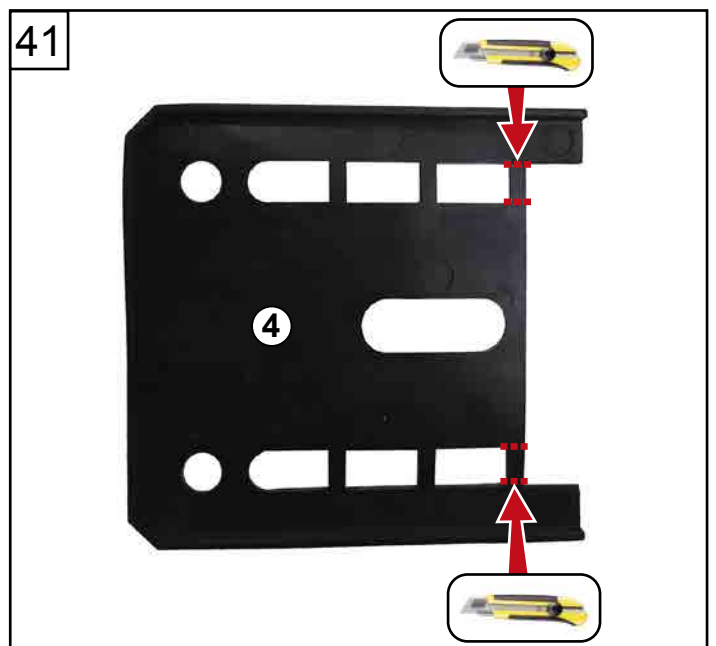
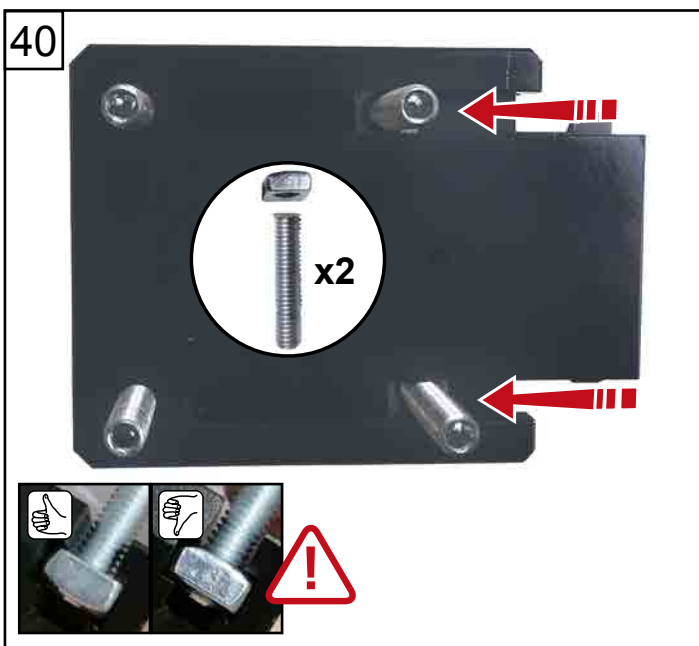
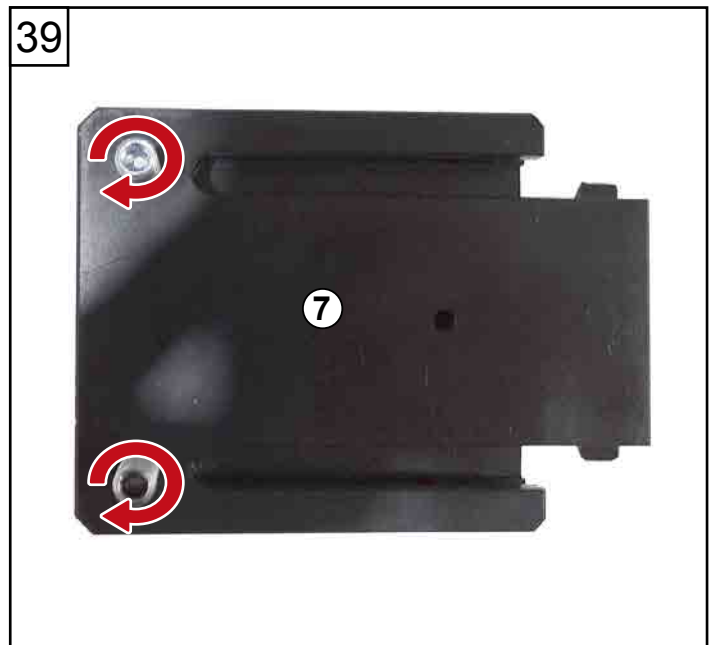
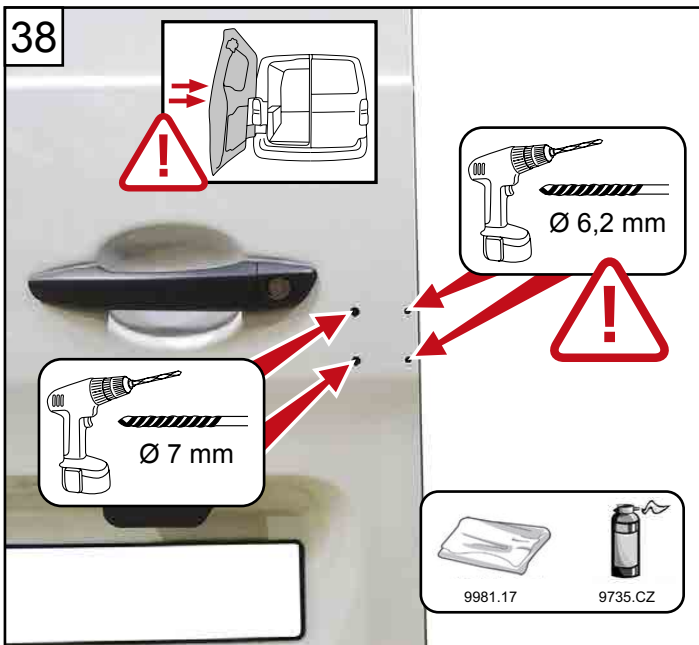
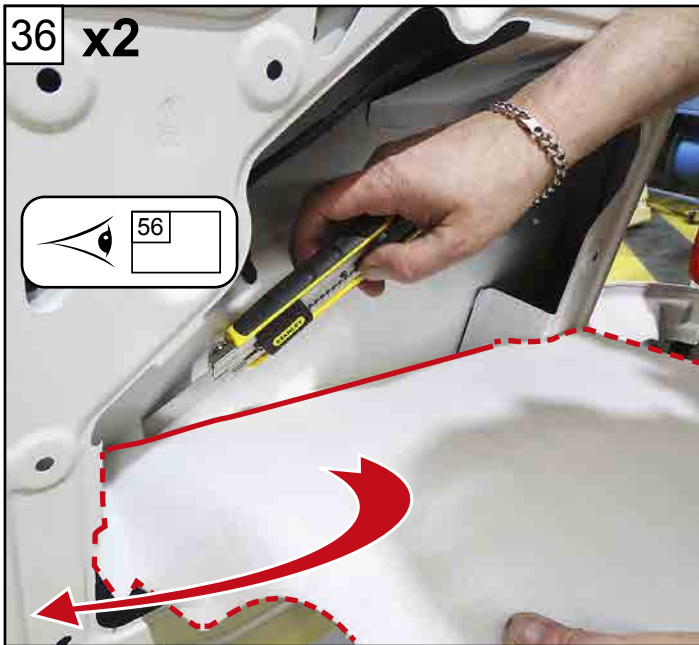


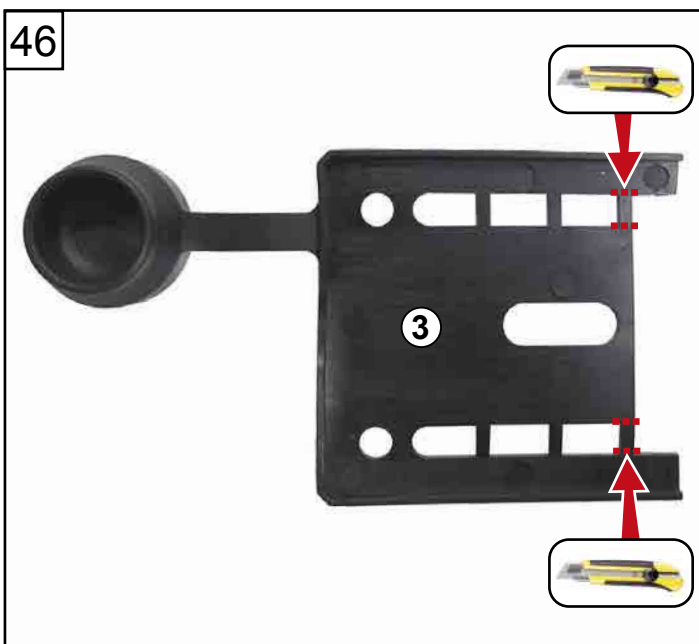
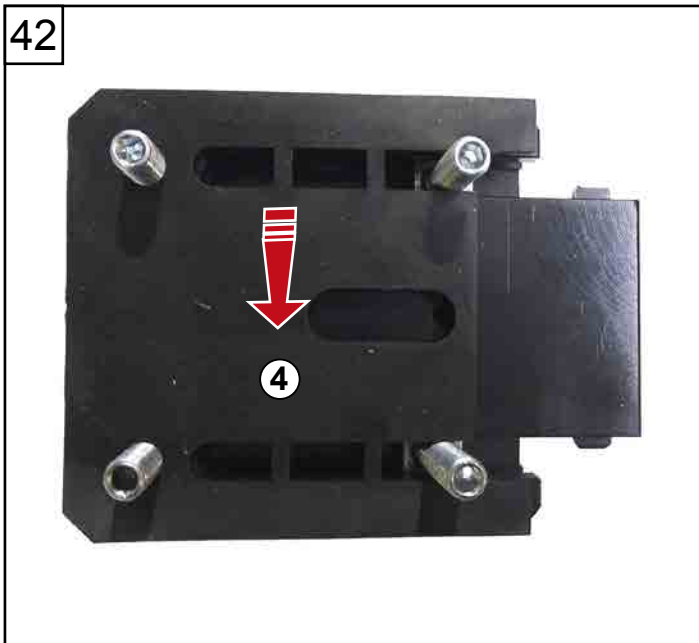


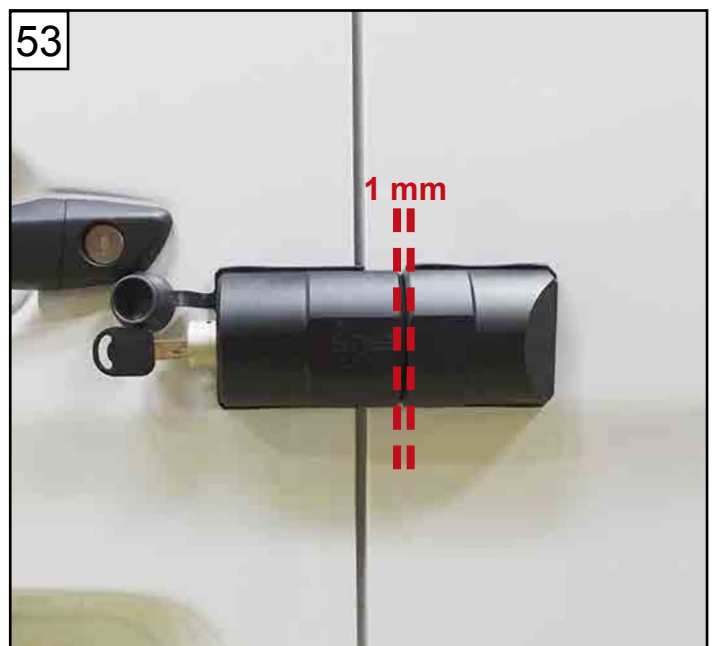
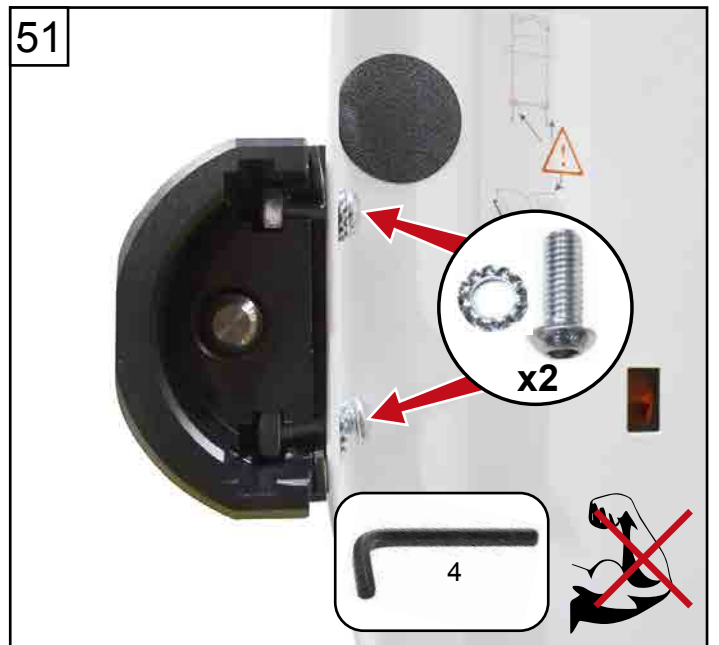
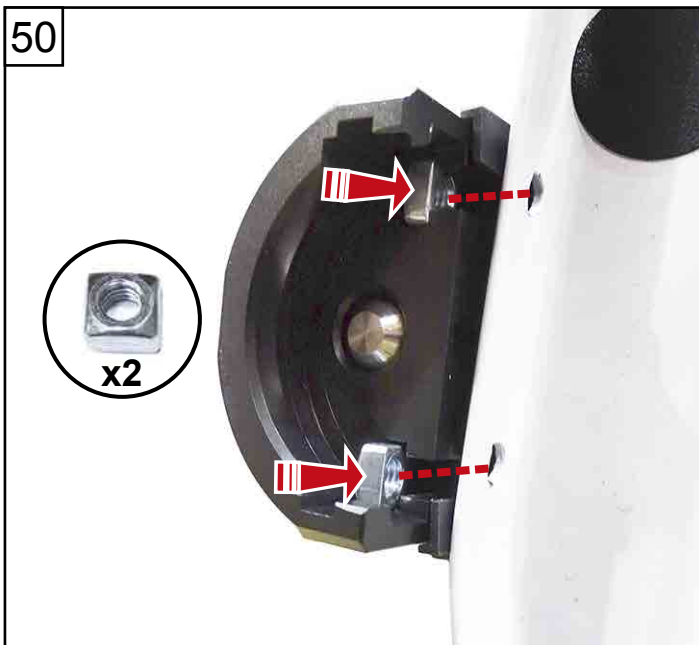


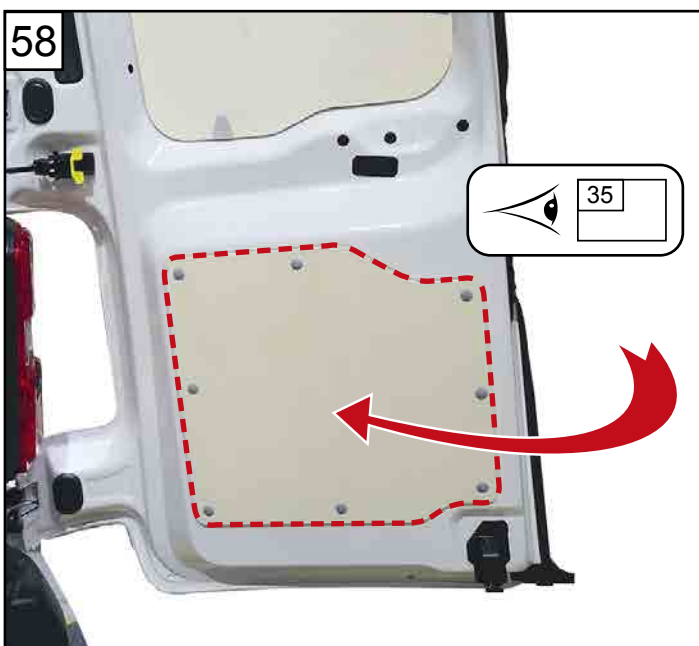
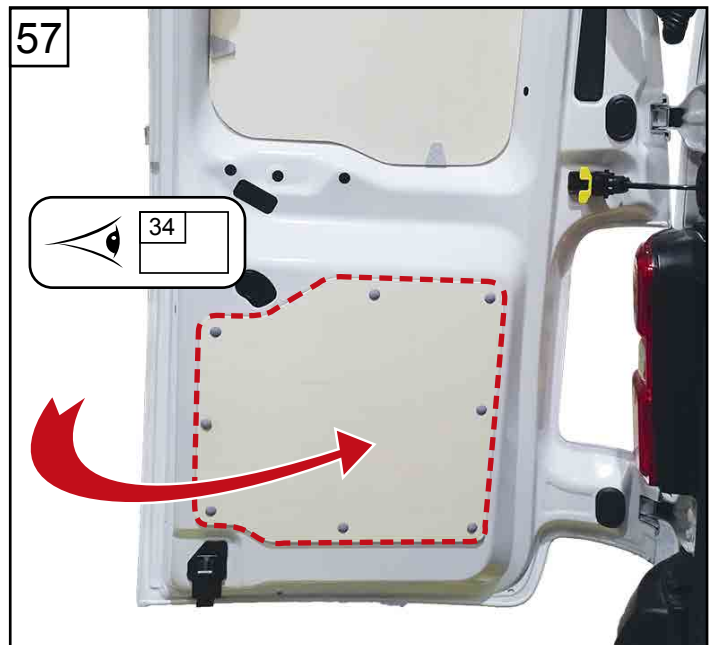
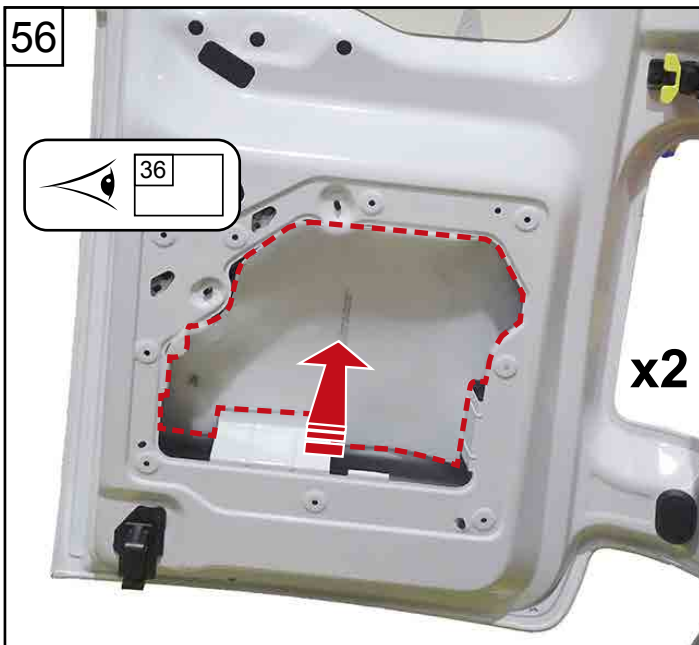






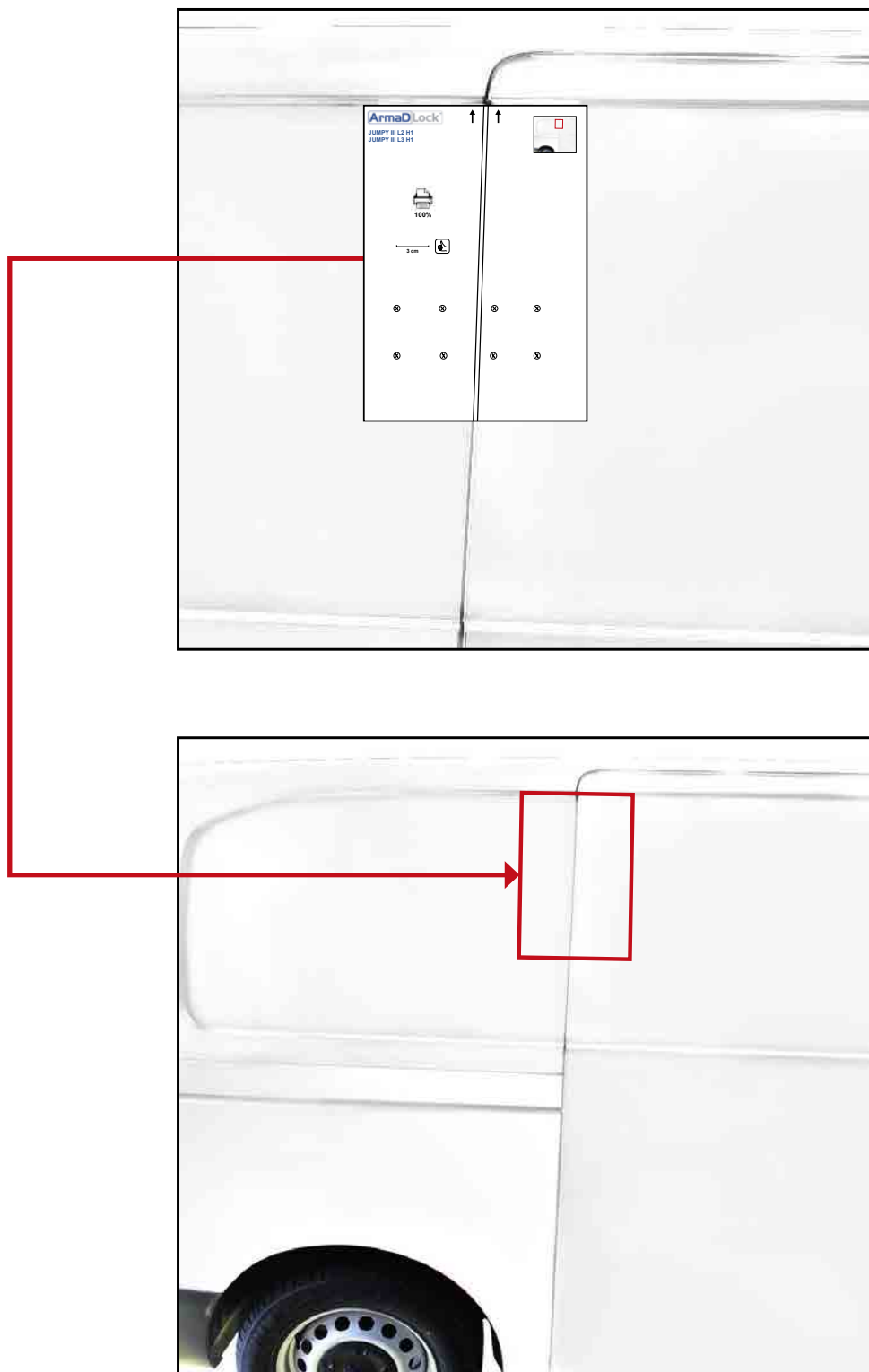






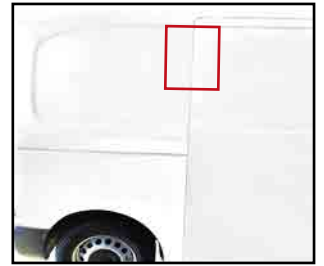
JUMPY III L2 H1

JUMPY III L3 H1



CITROEN JUMPY III L2 H1
CITROEN JUMPY III L3 H1

Gabarit de perçage
Coté extérieur
Porte latérale



100%

3 cm



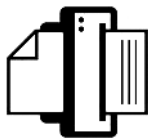
Joint



ArmaD Lock™

JUMPY III L2 H1
JUMPY III L3 H1

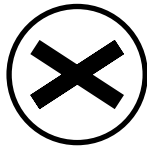
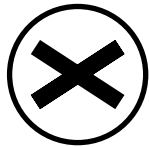
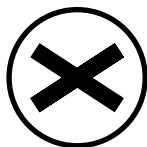
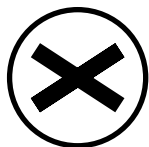
**Gabarit de perçage
Côté extérieur
Porte latérale**



100%

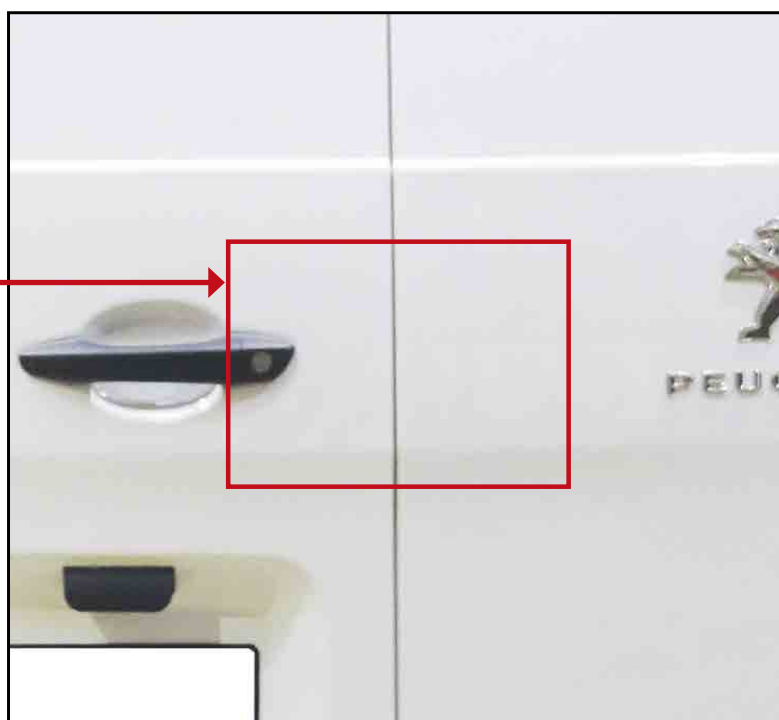
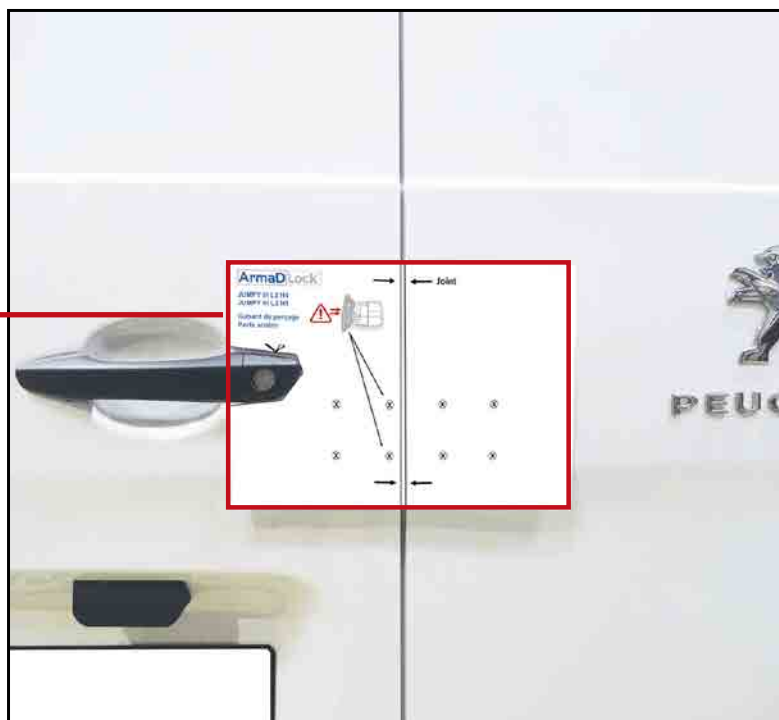


3 cm



JUMPY III L2 H1

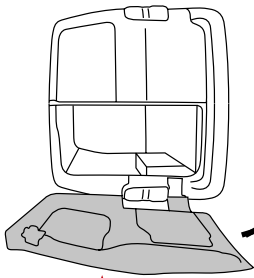
JUMPY III L3 H1



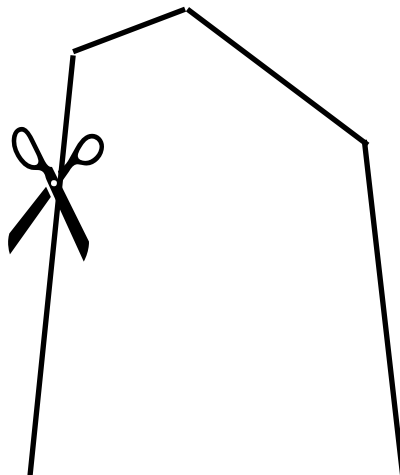
ArmaD Lock™

JUMPY III L2 H1
JUMPY III L3 H1

Gabarit de perçage
Porte arrière



Joint
↓





DIVISION AUTOMOBILE MUL-T-LOCK

**4 AVENUE D'OUessant
91140 VILLEBON SUR YVETTE**

Tél. : 01 41 28 39 70

Fax : 01 69 53 01 85



SUPPORT COMMERCIAL

01 41 28 39 70

adv@mul-t-lock.fr

SUPPORT TECHNIQUE

automobile@mul-t-lock.fr

**TOUTES LES PHOTOS DE LA PRÉSENTE NOTICE SONT LA PROPRIÉTÉ EXCLUSIVE DE MUL-T-LOCK.
REPRODUCTION STRICTEMENT INTERDITE. NOTICE RÉSERVÉE EXCLUSIVEMENT AUX PRODUITS DE LA MARQUE MUL-T-LOCK.**