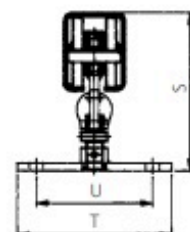
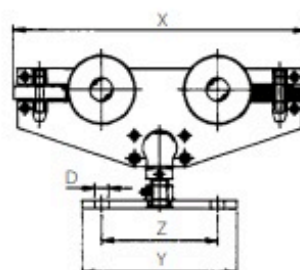


MONTURES



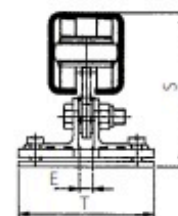
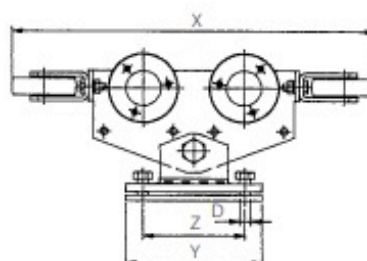
244.130
254.130

244.130
254.130



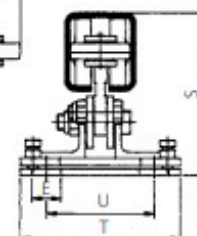
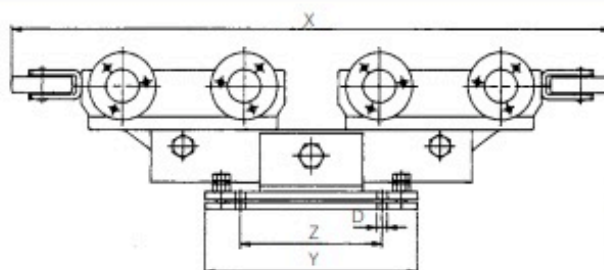
264.130

264.130



264.150

264.150



Nr.	S (mm)	T (mm)	U (mm)	D (mm)	E (mm)	X (mm)	Y (mm)	Z (mm)	Poids (kg)
244.130	min.178 max.186	125	100	13	-	375	160	135	5,200
254.130	min.195 max.203	200	150	18	-	380	200	150	8,85
264.130	225	200	-	18	38	533	200	150	20
264.150	246	250	170	21	42	933	330	220	50